



# BMS Wi-Fi 1.x

CONNECTION MANUAL

Revision 1 (04-August-2021)

# Contents

|   |                              |   |
|---|------------------------------|---|
| 1 | General information .....    | 3 |
| 2 | Connection procedure.....    | 4 |
| 3 | Configuration procedure..... | 5 |
| 4 | Contacts.....                | 6 |
| 5 | Revision history .....       | 7 |
| 6 | Notes.....                   | 8 |

# 1 General information

The BMS Wi-Fi 1.x (see Figure 1) is an adapter for the BMS controller to connect to a Wi-Fi network.



Figure 1. BMS Wi-Fi 1.x

There is a diagram of a battery system controlled by a top-level system over the Wi-Fi network in Figure 2.

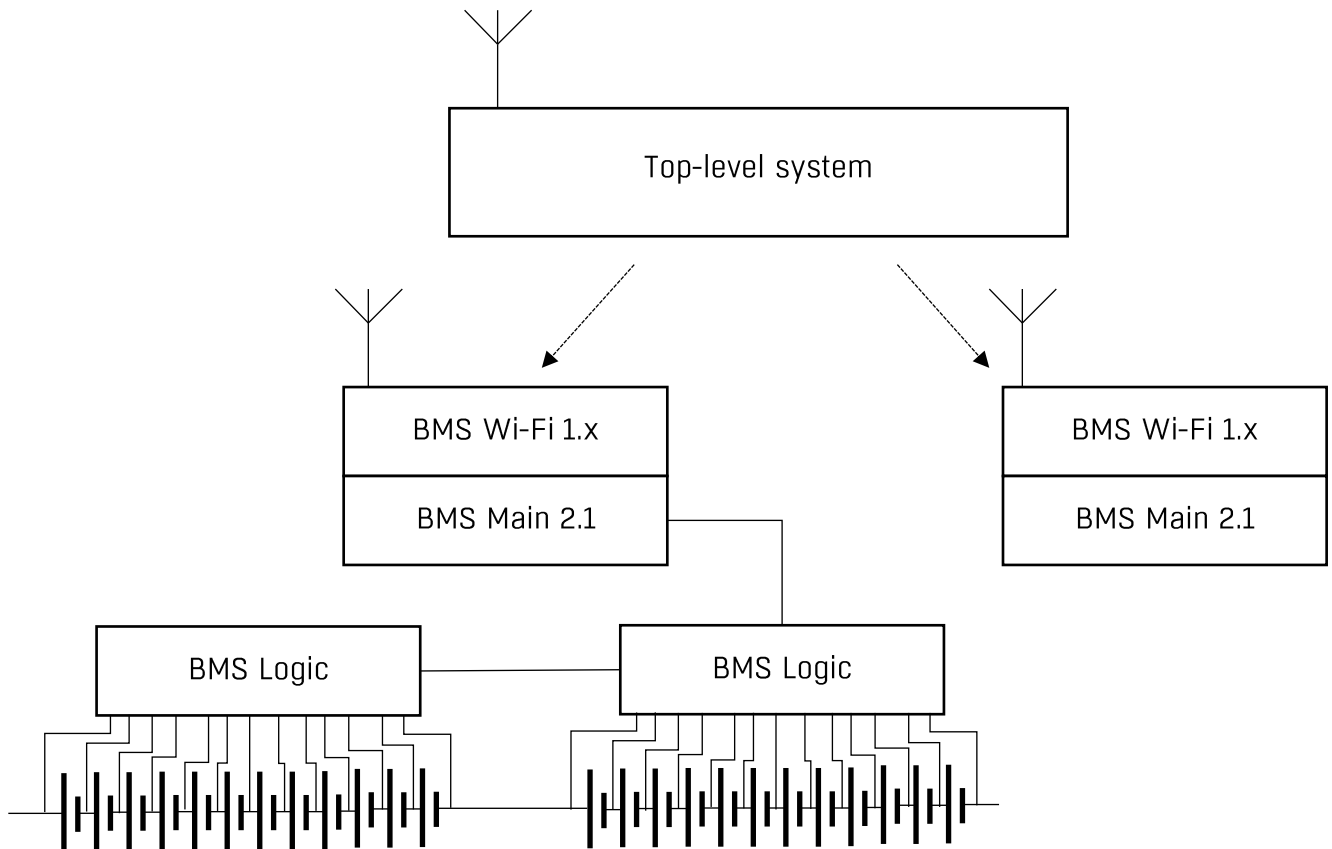


Figure 2. Battery system connected to the Wi-Fi network

## 2 Connection procedure

### Attention!

Connecting the BMS Wi-Fi 1.x is performed to the powered-off BMS Main 2.1

The BMS Wi-Fi 1.x must be inserted to the P5 header of the BMS Main 2.1 (see Figure 3). The device must be fixed to the BMS Main 2.1 by 10mm M3 male-female standoffs and M3 screws.

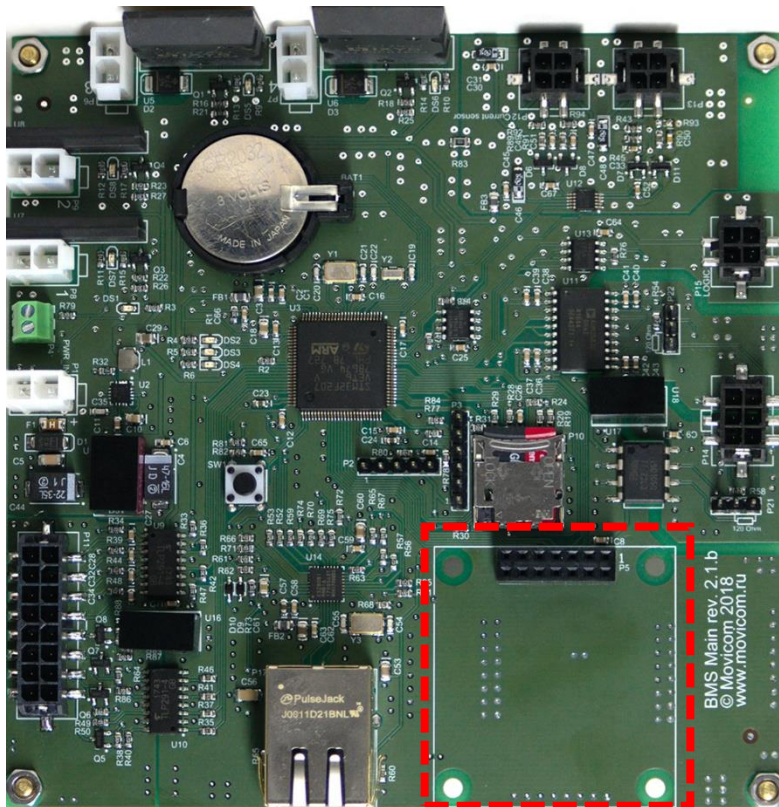


Figure 3. The BMS Wi-Fi placement on the BMS Main 2.1

### 3 Configuration procedure

Configuring the BMS Wi-Fi 1.x must be done according to the BMS Main 2.1 configuration manual. Wi-Fi connection settings are in the “Connectivity -> Wi-Fi” section of the BMS Main 2.1 web interface. To apply new connection settings, it is necessary to restart the BMS Main 2.1.

## 4 Contacts

*Movicom Electric LLC*



117246, Russia, Moscow, Nauchniy proezd, 20-2



+7 (495) 989-56-47



[electric@movicom.com](mailto:electric@movicom.com)

[movicomelectric.com](http://movicomelectric.com)

## 5 Revision history

| Rev. number | Rev. date      | Changes        |
|-------------|----------------|----------------|
| 1           | 04-August-2021 | First revision |

